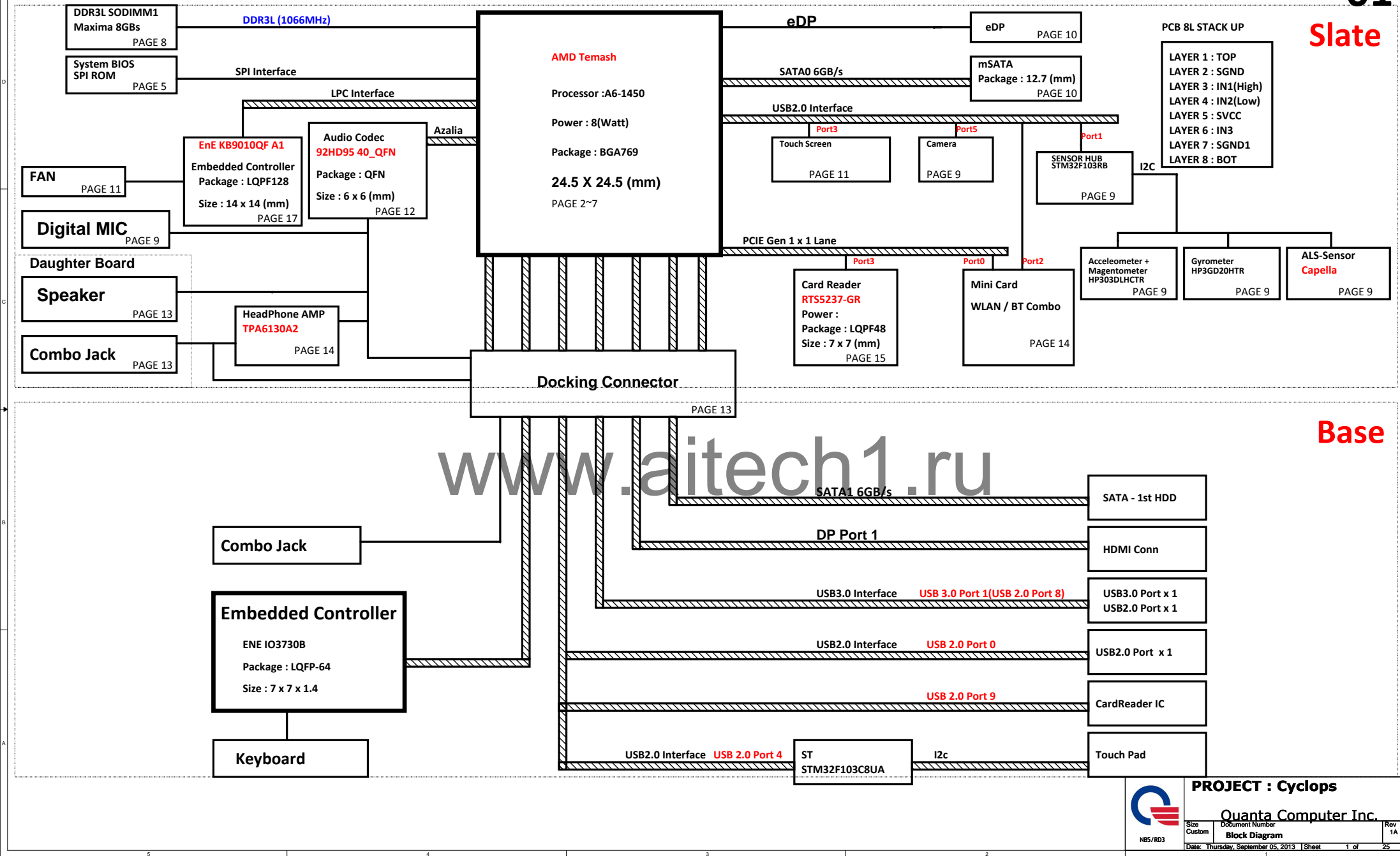


Slate

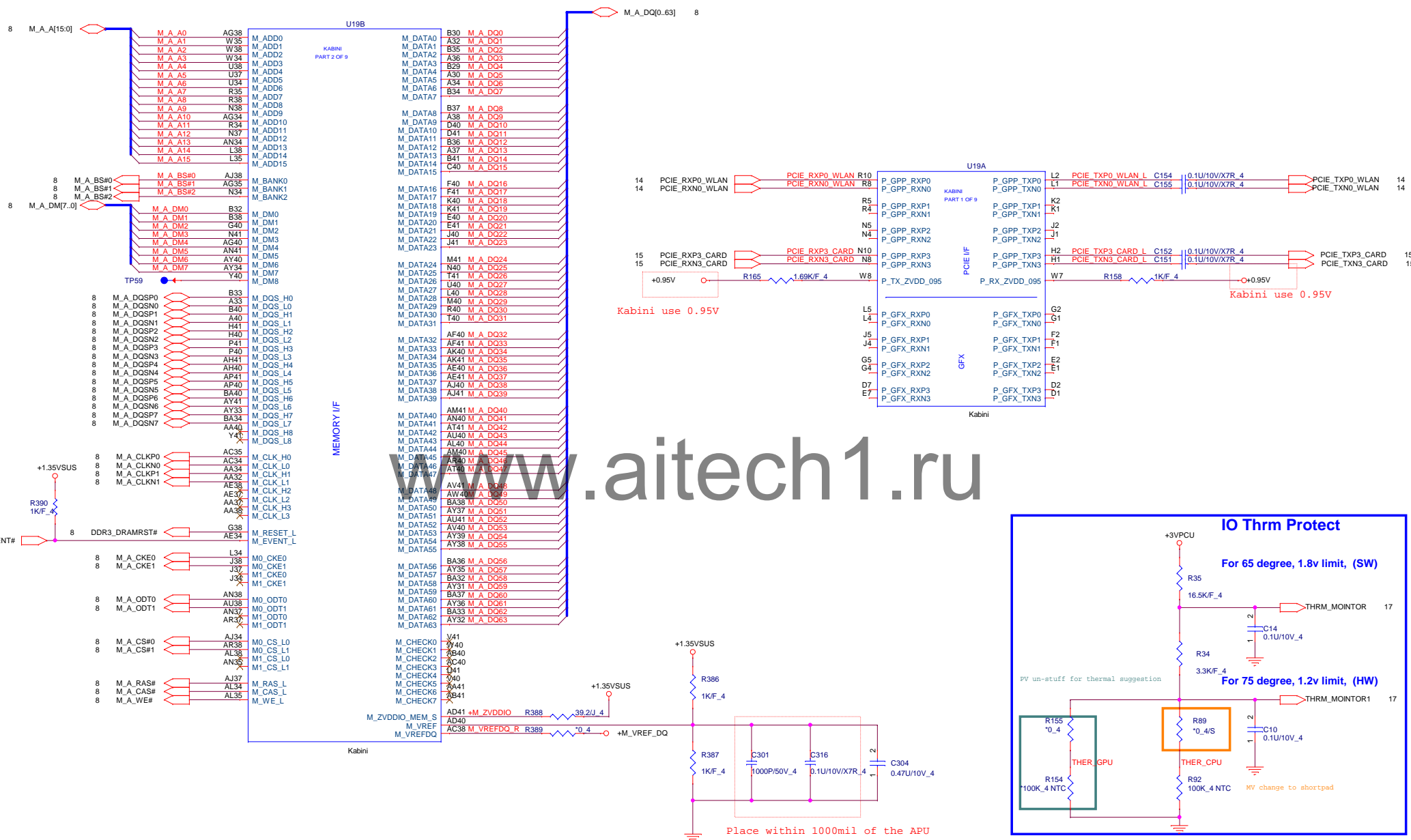
Base

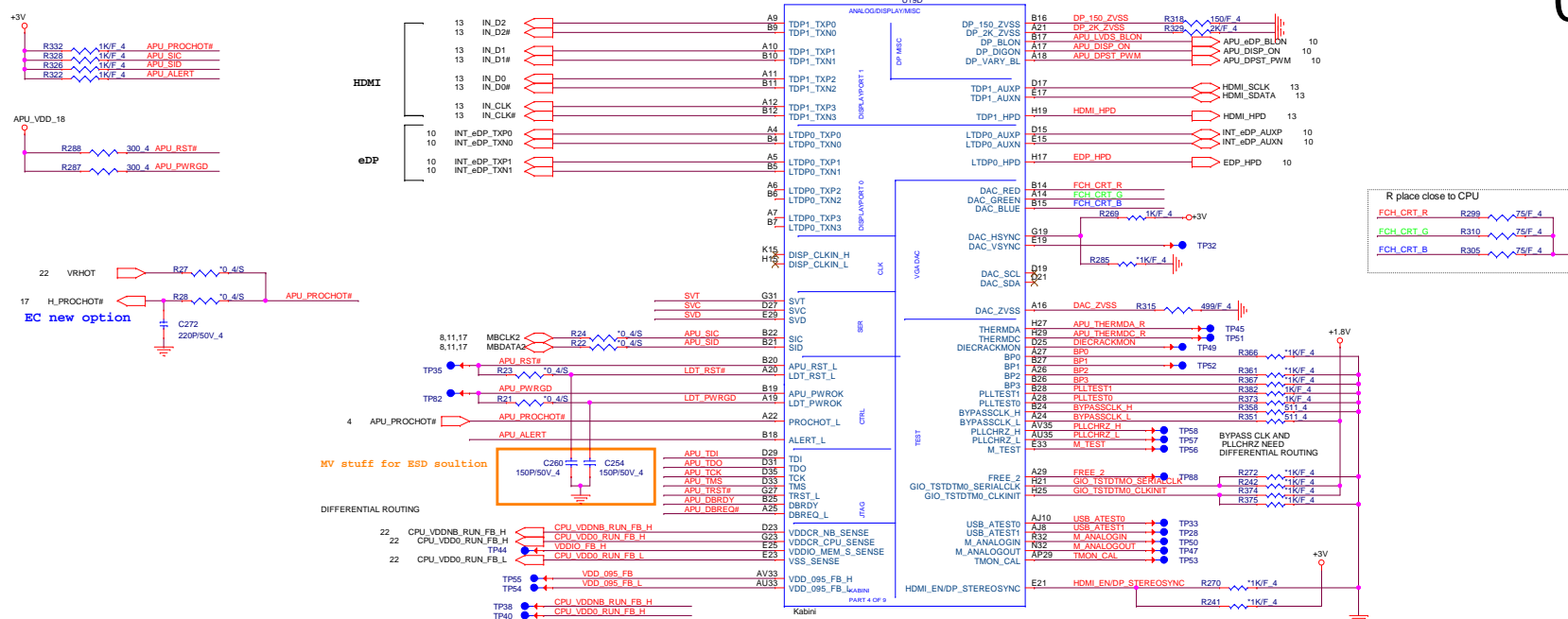


PROJECT : Cyclops

Quanta Computer Inc.

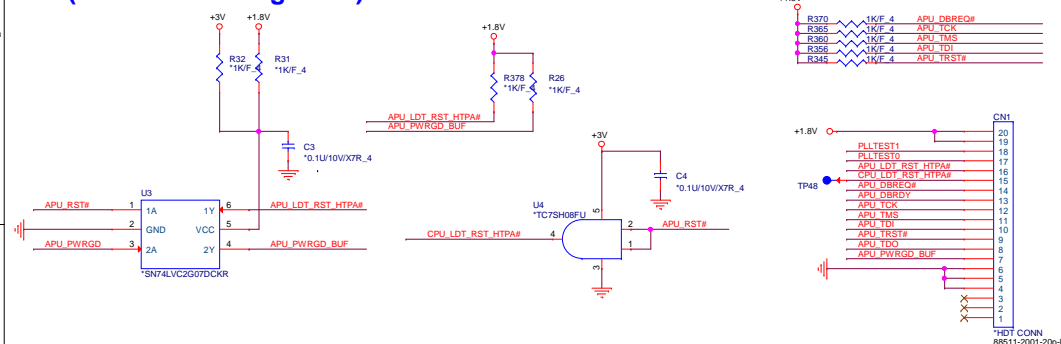
Size	Document Number	Rev
Custom	Block Diagram	1A
Date: Thursday, September 05, 2013		1 of 25



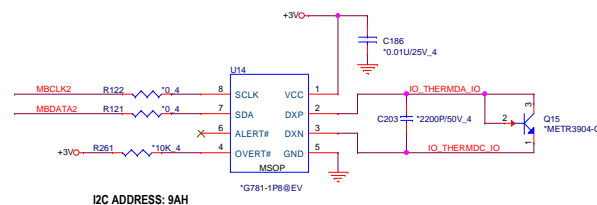


www.aitech1.ru

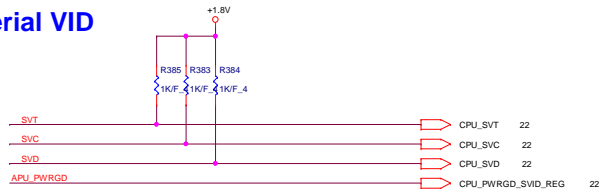
HDT(Hardware Debug Tool) Connector



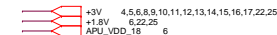
Local Thermal Sensor

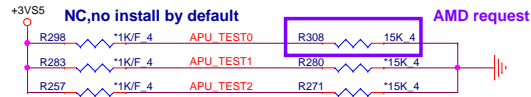
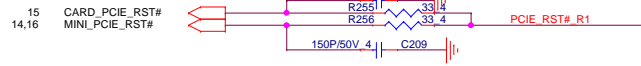


Serial VID

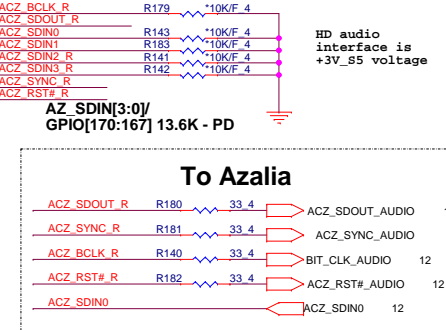
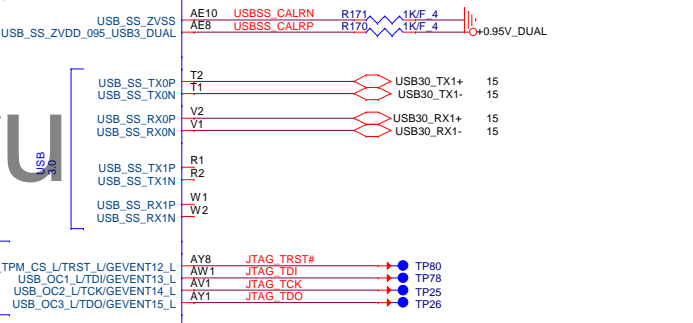
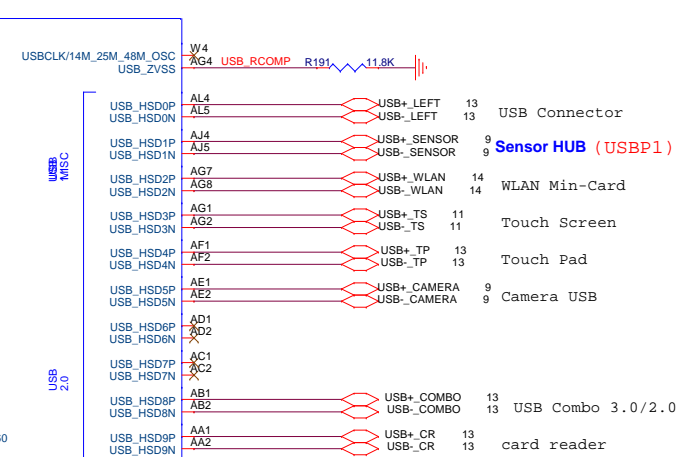
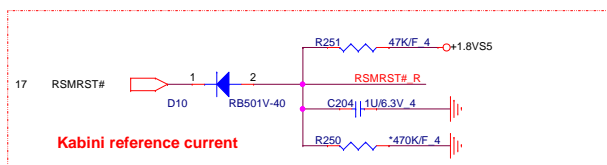
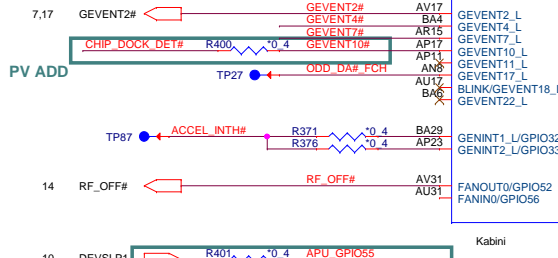
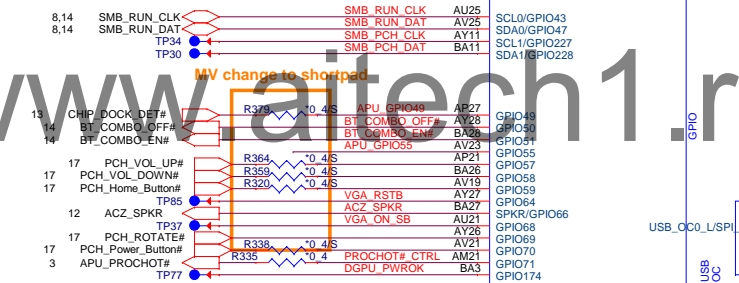
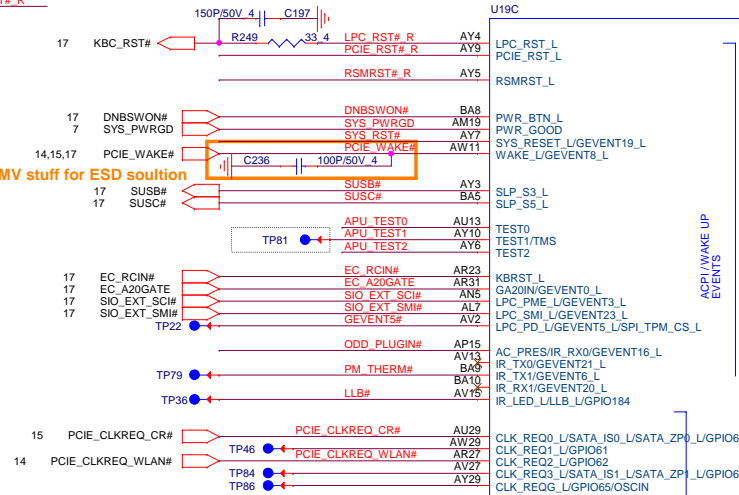
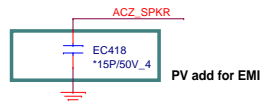
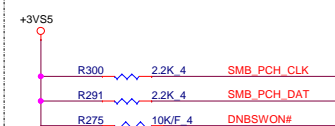
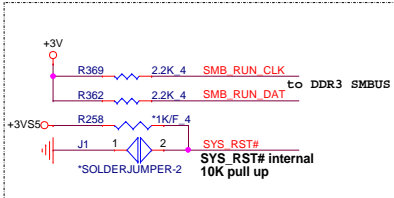


VFIX MODE		VID Override table (VDD)
SVC	SVD	Boot Voltage
0	0	1.1V
0	1	1.0V
1	0	0.9V
1	1	0.8V





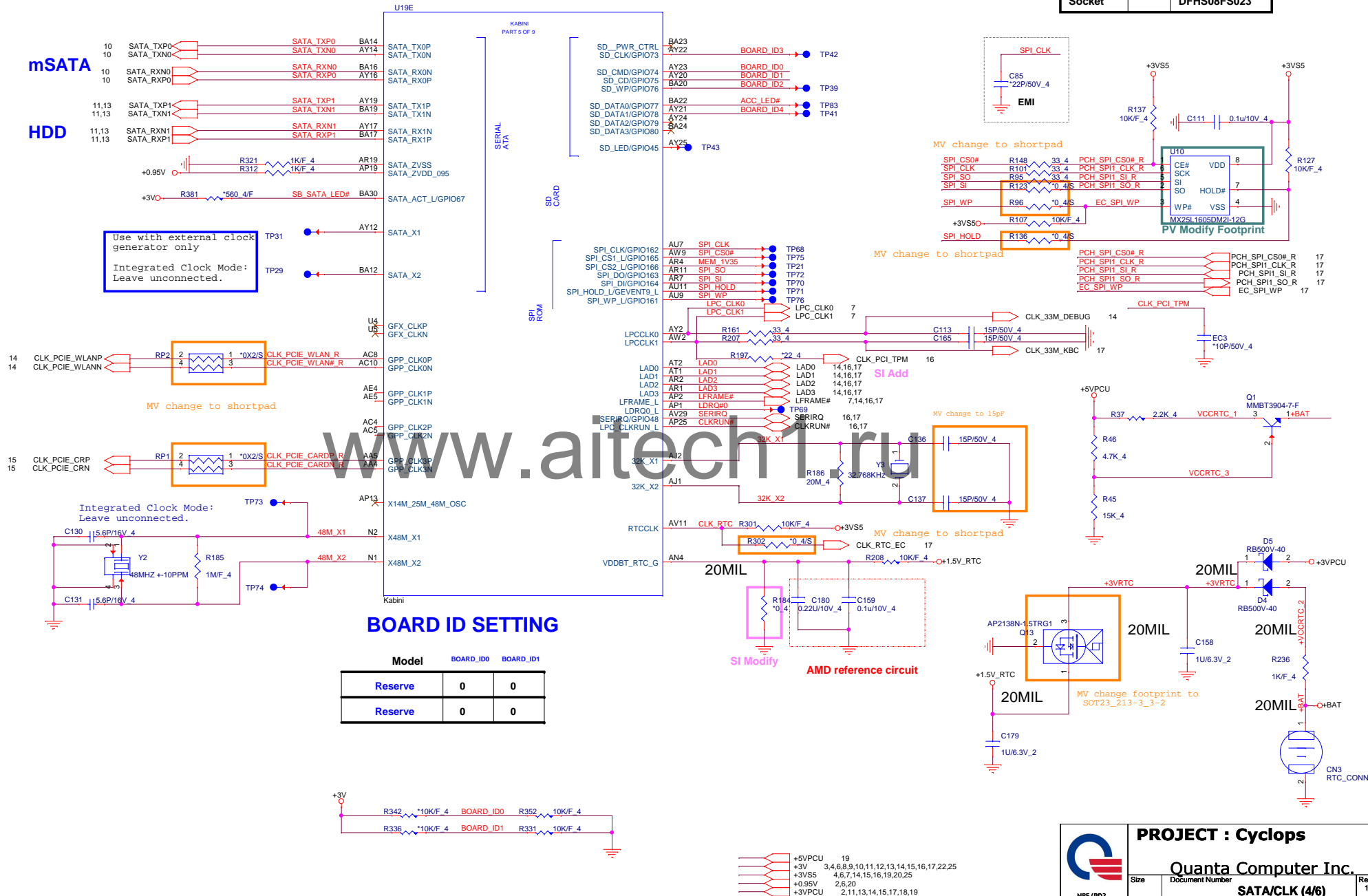
TEST2	TEST1	TEST0	Description
0	0	0	FCH TAP accessible from APU when TAPEN is asserted FCH JTAP pins are overloaded for multiple functions, in this configuration the FCH JTAP are used as non-JTAG pins
0	0	1	Reserved
0	1	X	Reserved
1	TMS	0	FCH JTAP multi-function pins are configured as JTAP pins, in this configuration the FCH TAP can be accessed from FCH JTAP pins
1	TMS	1	Use on ATE only Yuba JTAG enabled

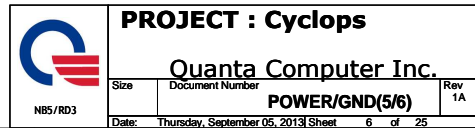


APU SPI ROM

Replace to MX25L3206EM2I-12G

Vender	Size	P/N
Winbond	4MB	AKE391P0N01
GigaDevice	4MB	AKE39G0Q00
Socket		DFHS08FS023

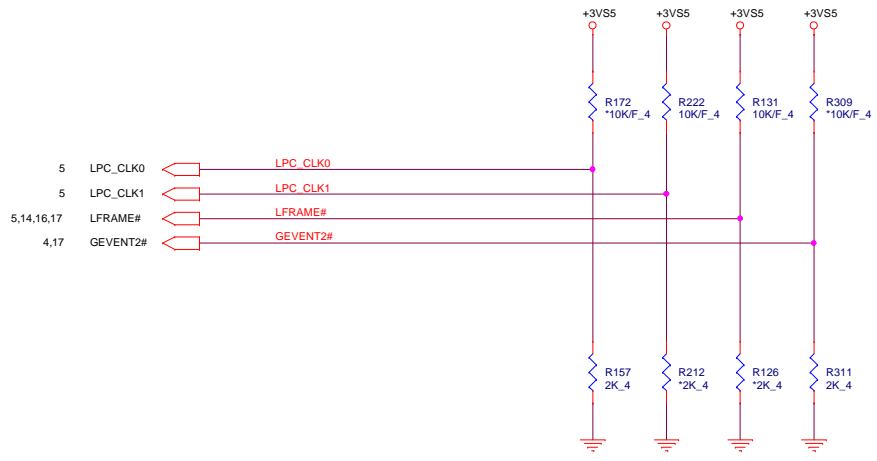






STRAPS PINS

OVERLAP COMMON PADS WHERE POSSIBLE FOR DUAL-OP RESISTORS.

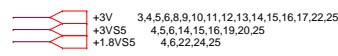
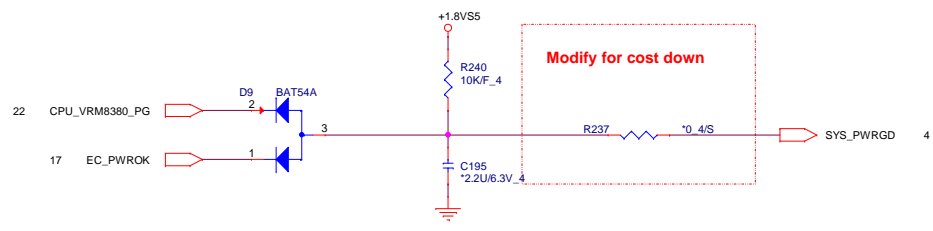


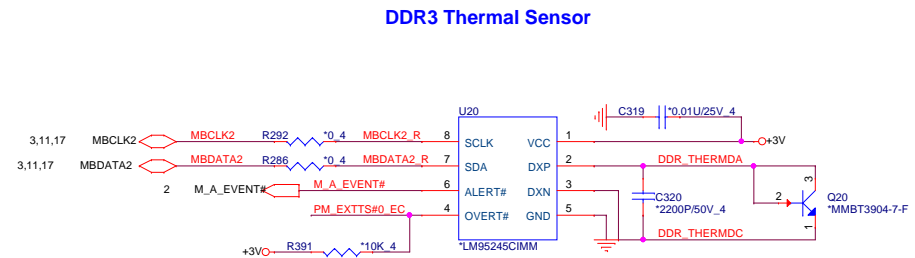
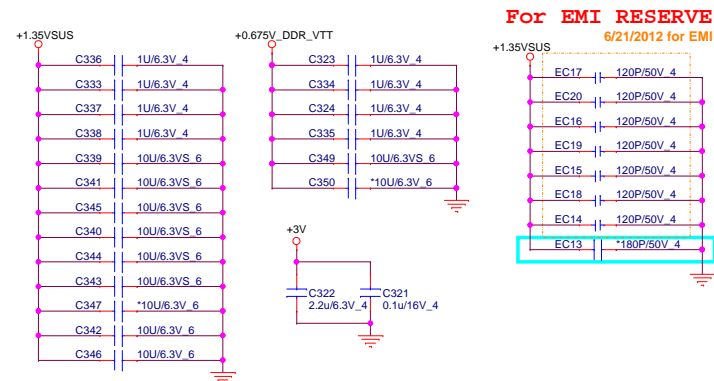
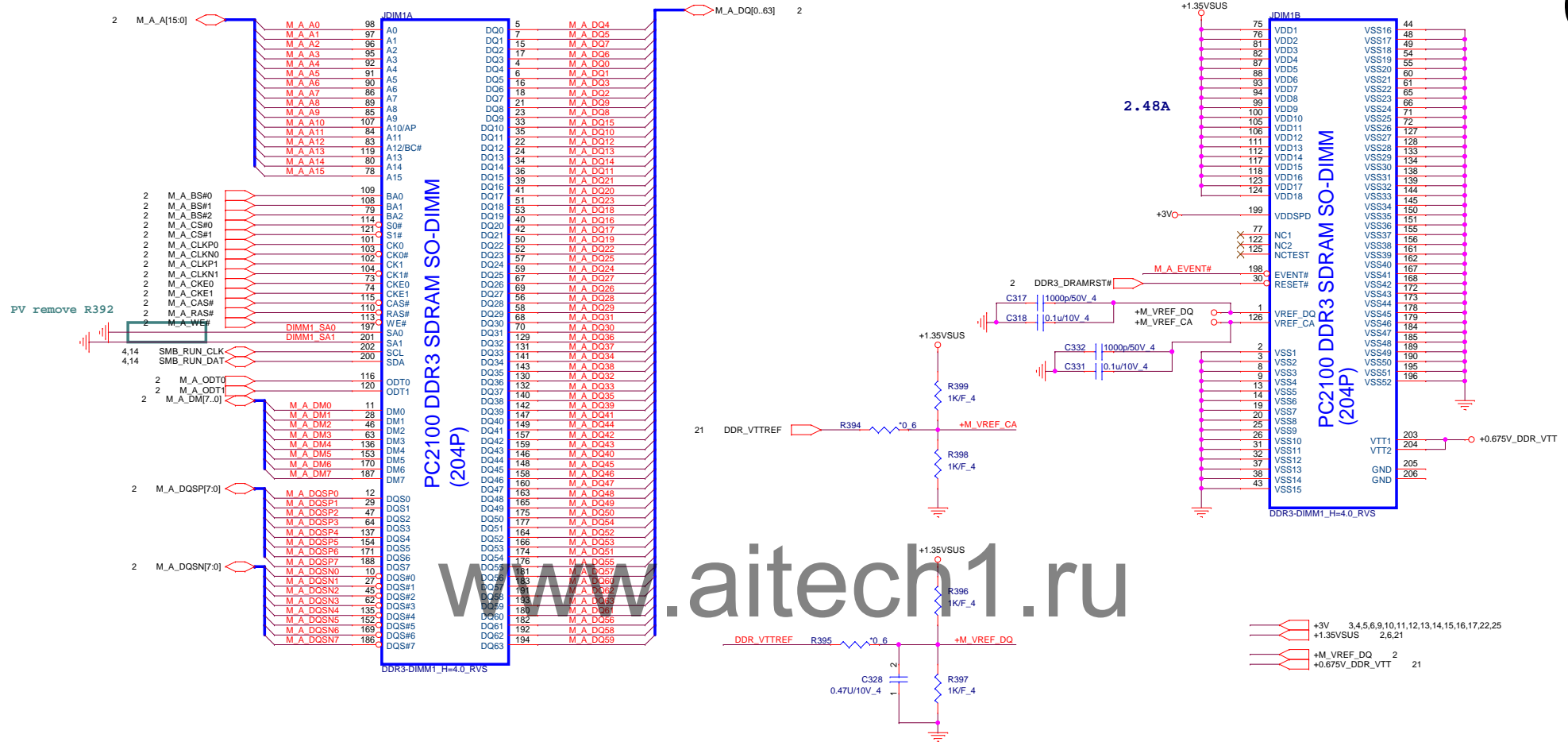
REQUIRED STRAPS

					LPC_CLK0	LPC_CLK1	LFRAME#	GEVENT2#
PULL HIGH					BOOT FAIL TIMER ENABLED	CLKGEN ENABLED	SPI ROM	1.8V SPI ROM
					DEFAULT	DEFAULT		
PULL LOW					BOOT FAIL TIMER DISABLED	CLKGEN DISABLED	LPC ROM	3.3V SPI ROM
					DEFAULT			DEFAULT

DEBUG STRAPS

SYS_PWRGD

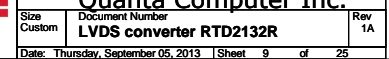


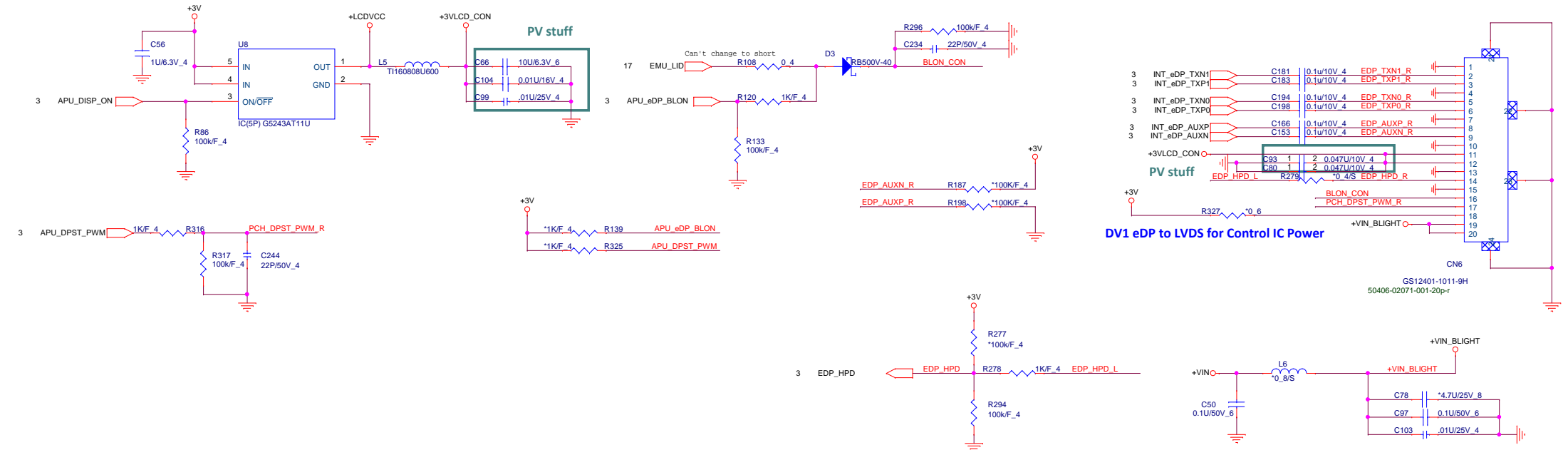


CAMERA CONN.



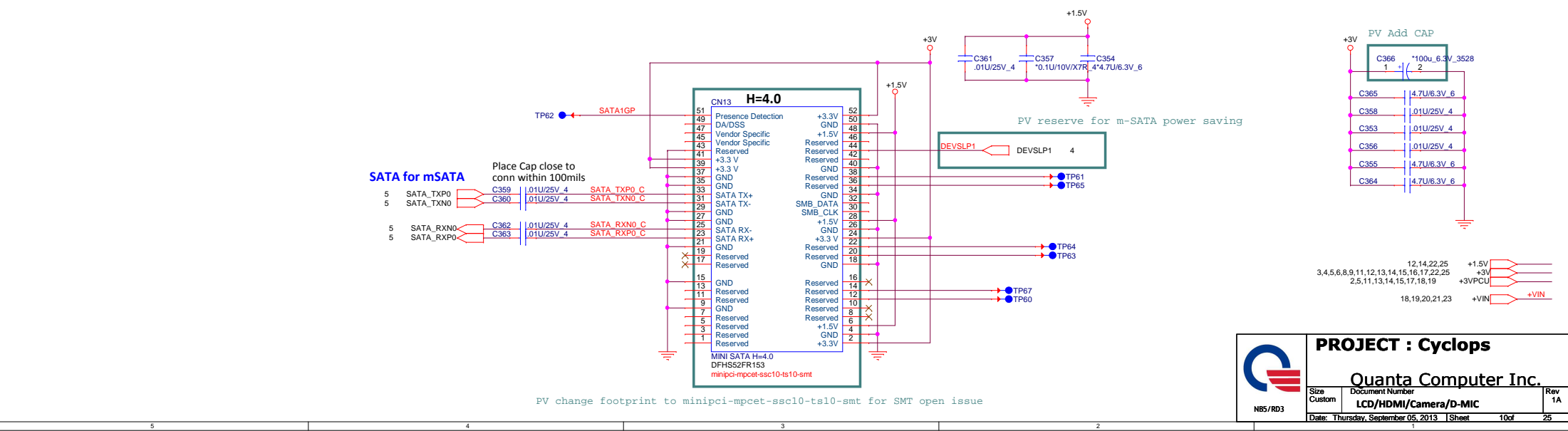
Gyro






Mini PCI-E Card 2- Full size mSATA

www.aitech1.ru





NBS/RD3

PROJECT : Cyclops

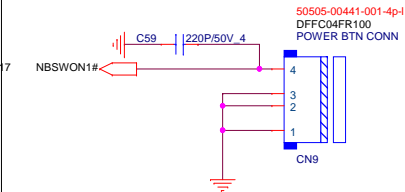
Quanta Computer Inc.

Size	Document Number	Rev
Custom	LCD/HDMI/Camera/D-MIC	1A

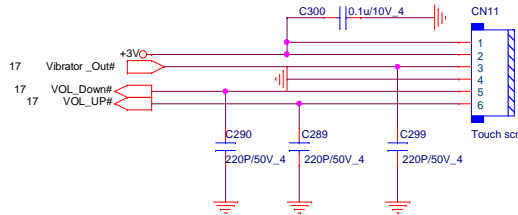
Date: Thursday, September 05, 2013 | Sheet 10 of 25

Control Buttons

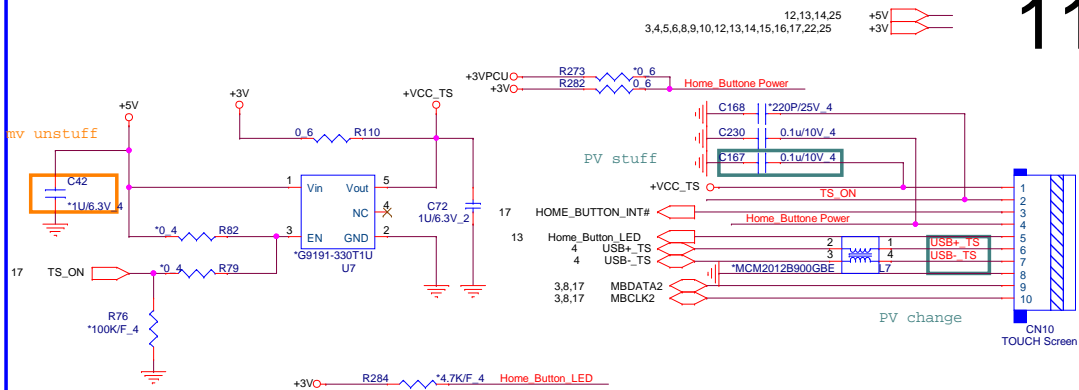
Power button



VOL BTN CONN

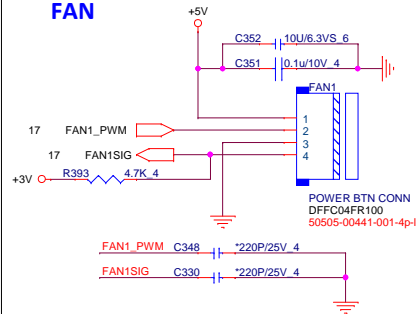


Touch screen

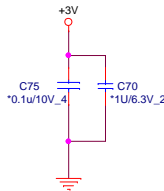


11

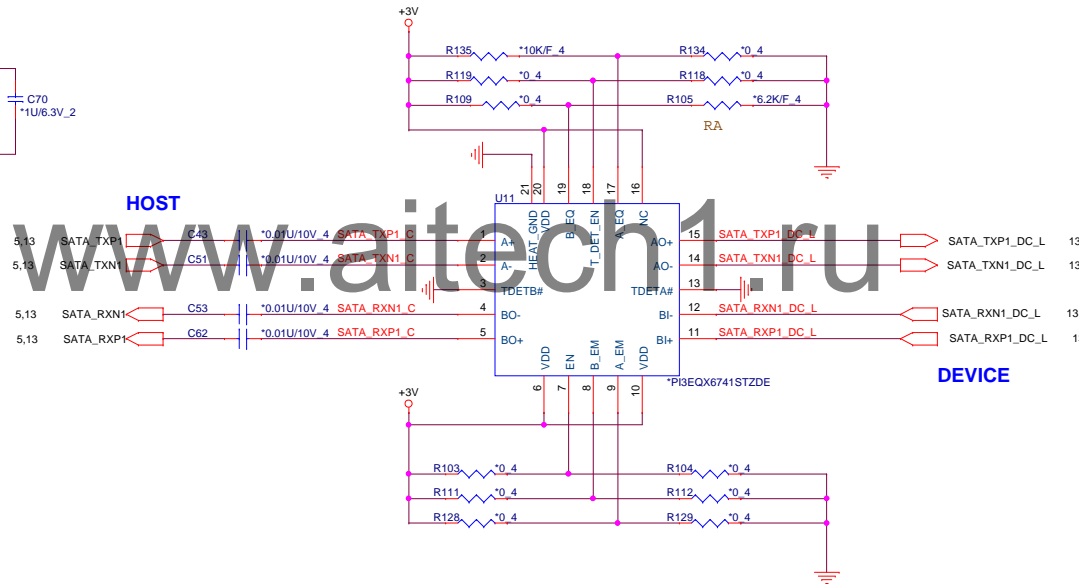
FAN



SATA Re-driver



HOST



DEVICE

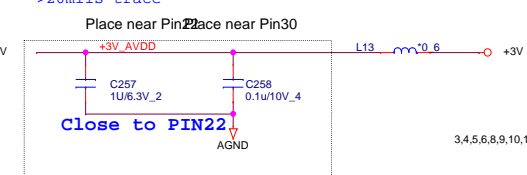
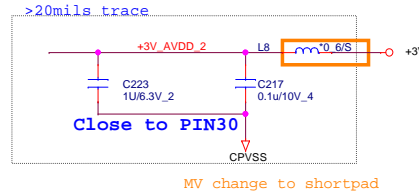
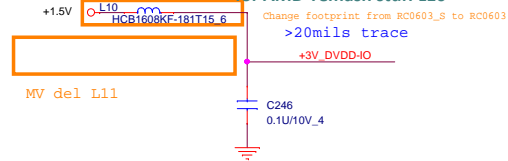
**PROJECT : Cyclops**

Quanta Computer Inc.

Azalia ALC 3227

Date: Thursday, September 05, 2013 Sheet 11 of 25

Audio Codec

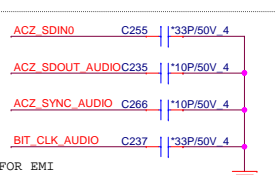
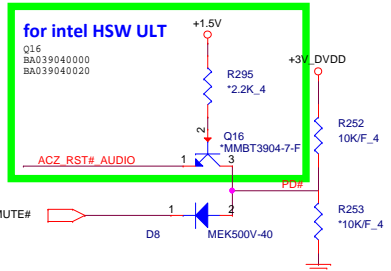
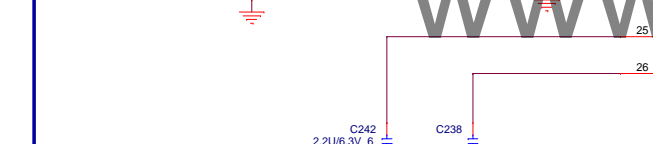
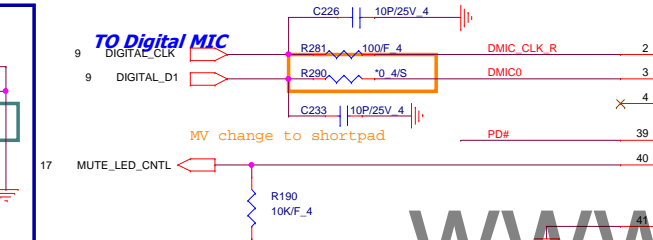
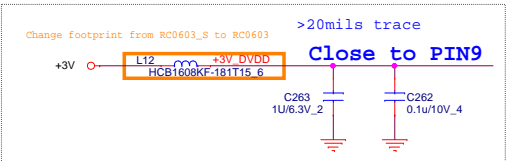
for intel HSW ULT stuff L11
for AMD Temash stuff L10

3,4,5,6,8,9,10,11,13,14,15,16,17,22,25
11,13,14,25
10,14,22,25

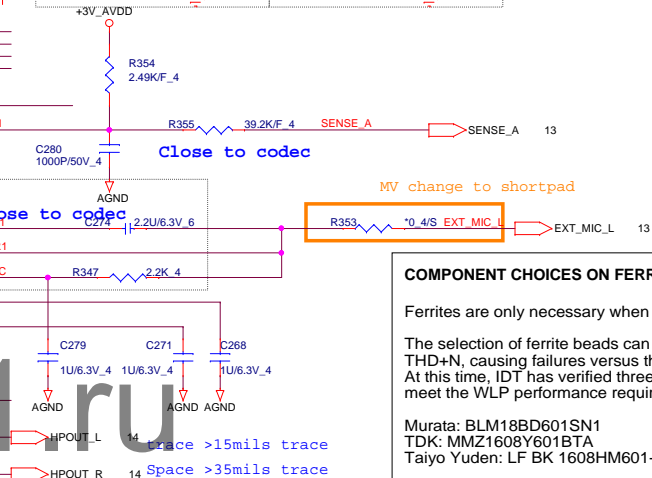
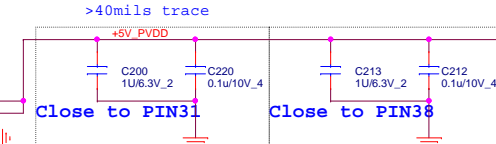
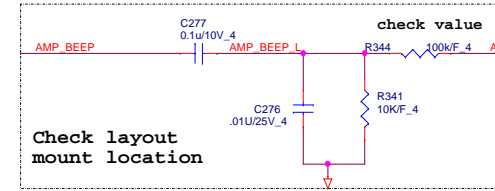
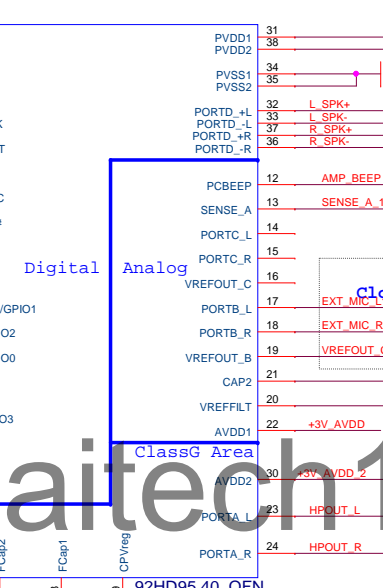
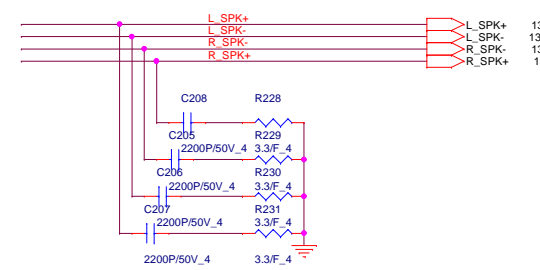
+3V

+5V

+1.5V



Speaker 4 ohm: 40mils

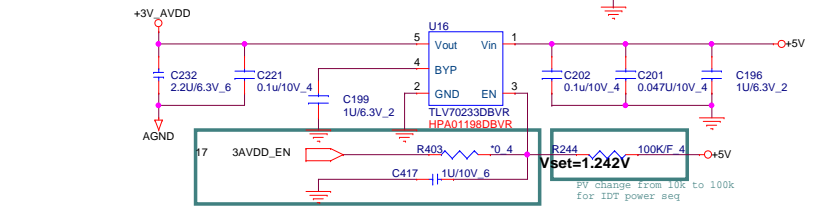
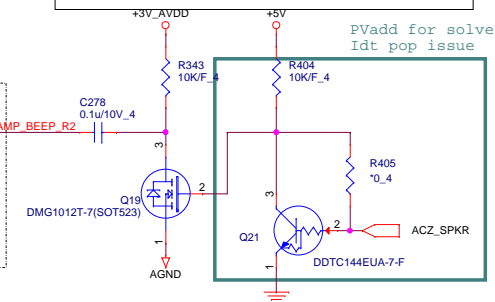


COMPONENT CHOICES ON FERRITES:

Ferrites are only necessary when required by EMI.

The selection of ferrite beads can have a large effect on THD+N, causing failures versus the WLP requirements. At this time, IDT has verified three ferrite beads that will meet the WLP performance requirements:

Murata: BLM18BD601SN1
TDK: MMZ1608Y601BTA
Taiyo Yuden: LF BK 1608HM601-T



PROJECT : Cyclops

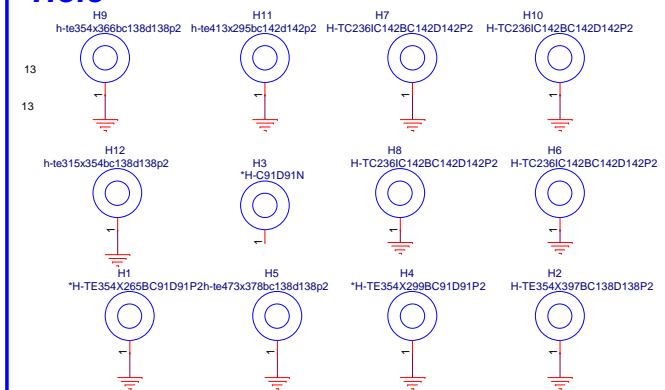
Quanta Computer Inc.

Size Custom

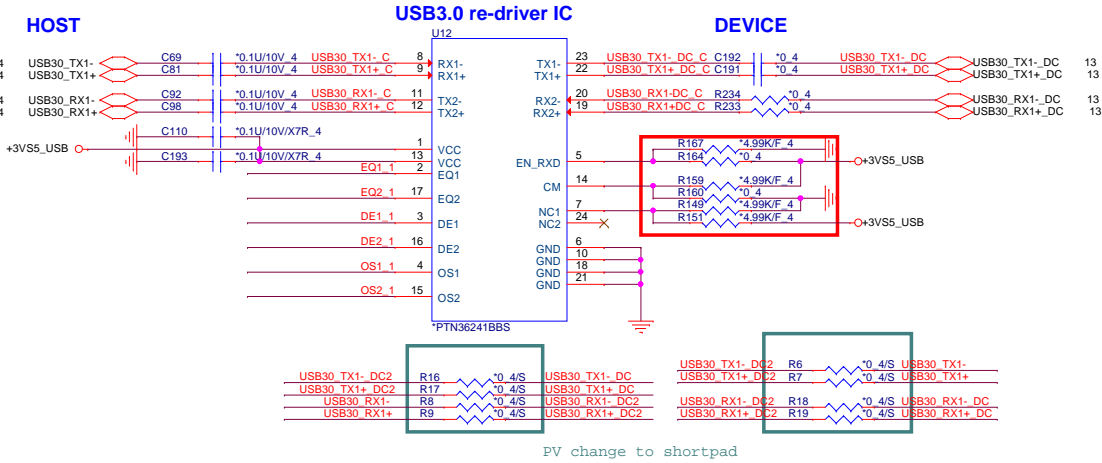
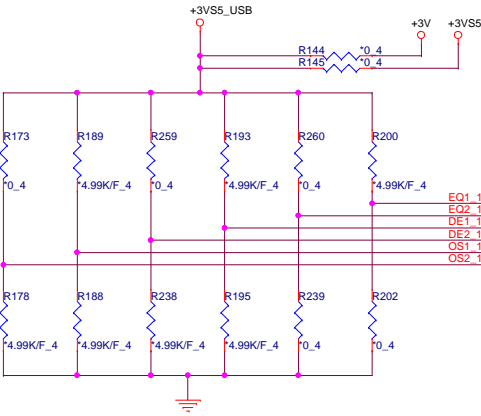
Document Number Azaia ALC 3227

Rev 1A

Date: Thursday, September 05, 2013 | Sheet 12 of 25

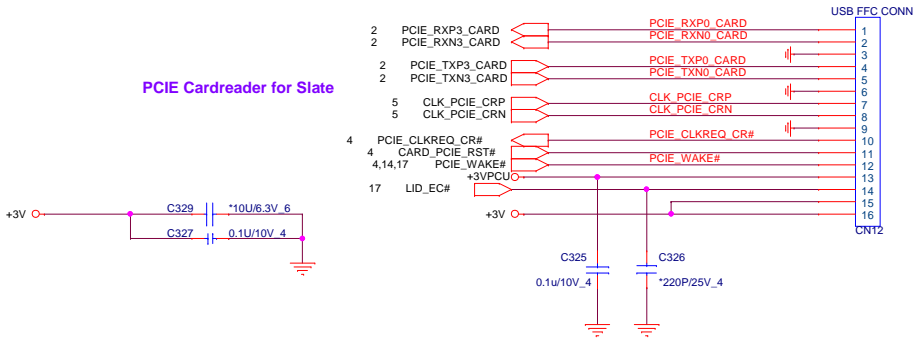


OSx		Transition Bit Amplitude	
NC(default)		1000	
0		870	
1		1085	
EQx		Equalization dB	
NC(default)		0	
0		7	
1		15	
DEx	OSx=NC	OSx=0	OSx=1
NC	-3.5dB	-2.2dB	-4.4dB
0	-6.0dB	-5.2dB	-6.0dB
1	-8.5dB	-8.9dB	-7.6dB
EN_RXD		DEVICE FUNCTION	
1(default)		Normal operating mode	
0		Sleep mode	
CM		DEVICE FUNCTION	
0(default)		Normal operating mode	
1		Compliance mode	

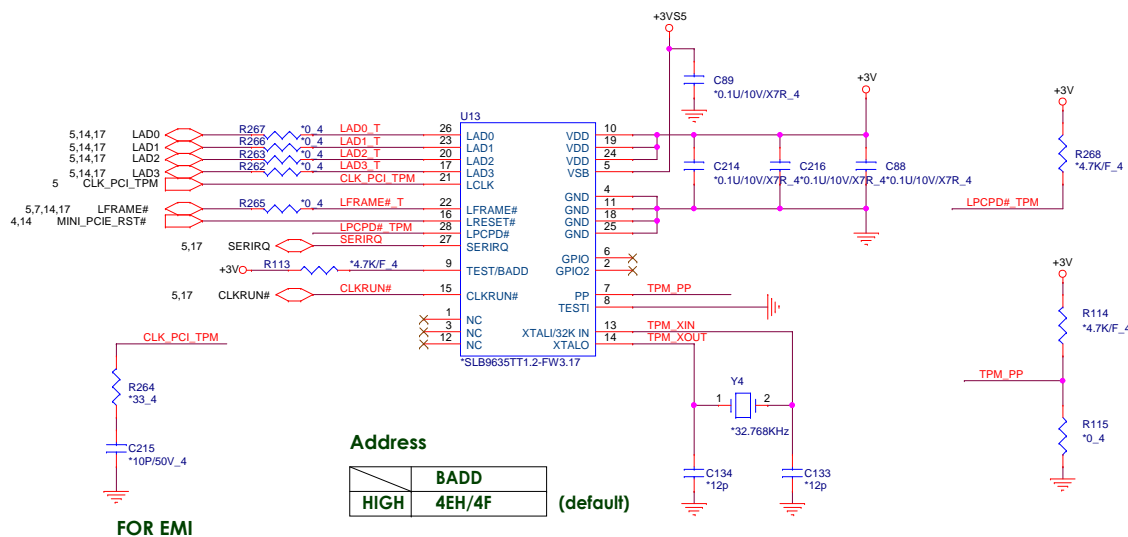


CardReader

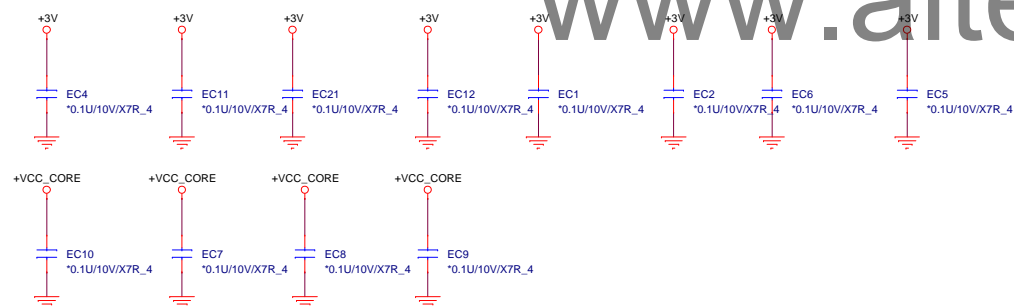
www.aitech1.ru



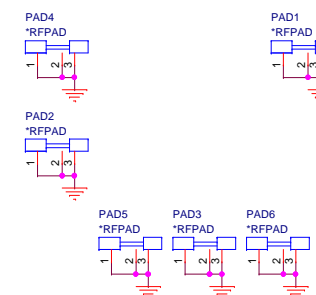
TPM

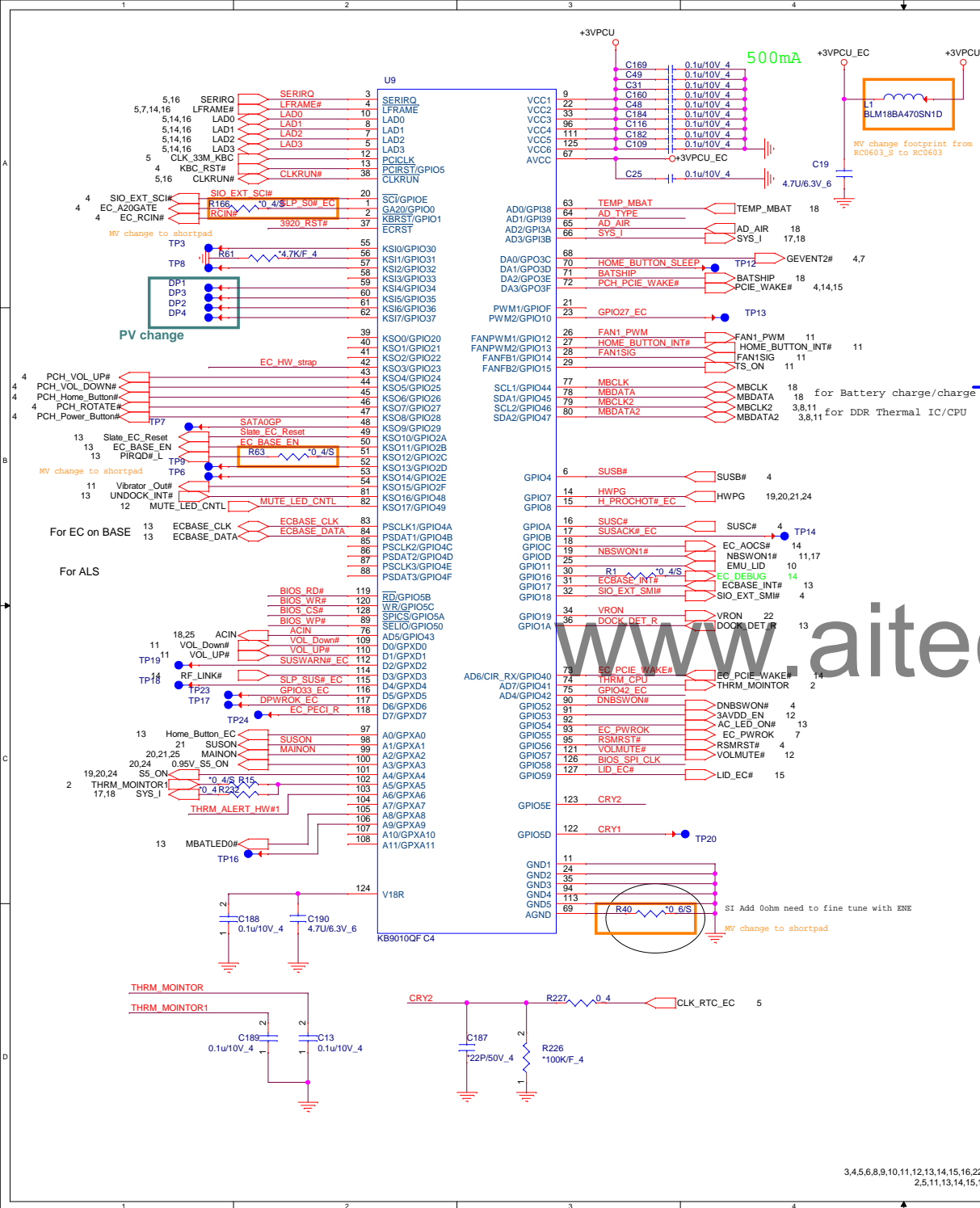


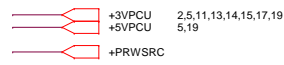
EMI

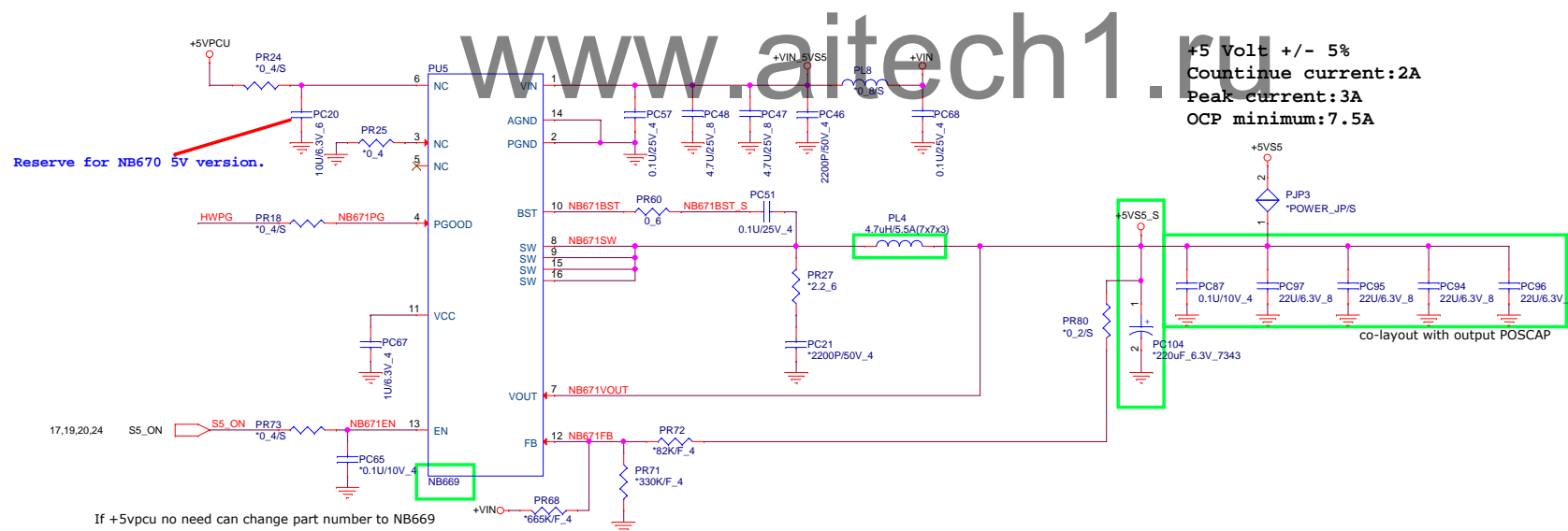
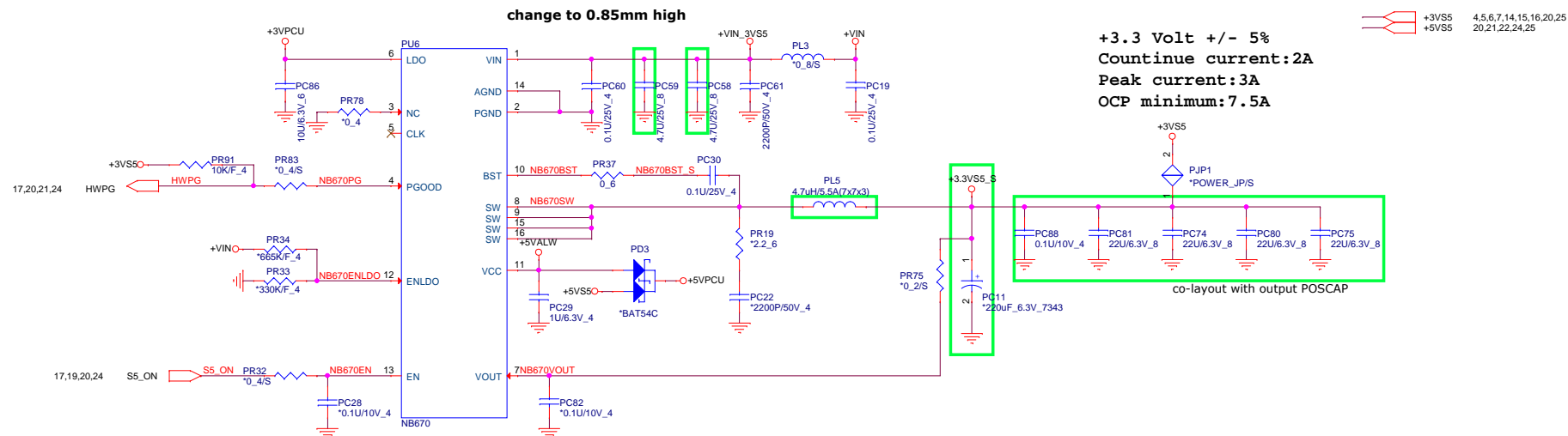


RF



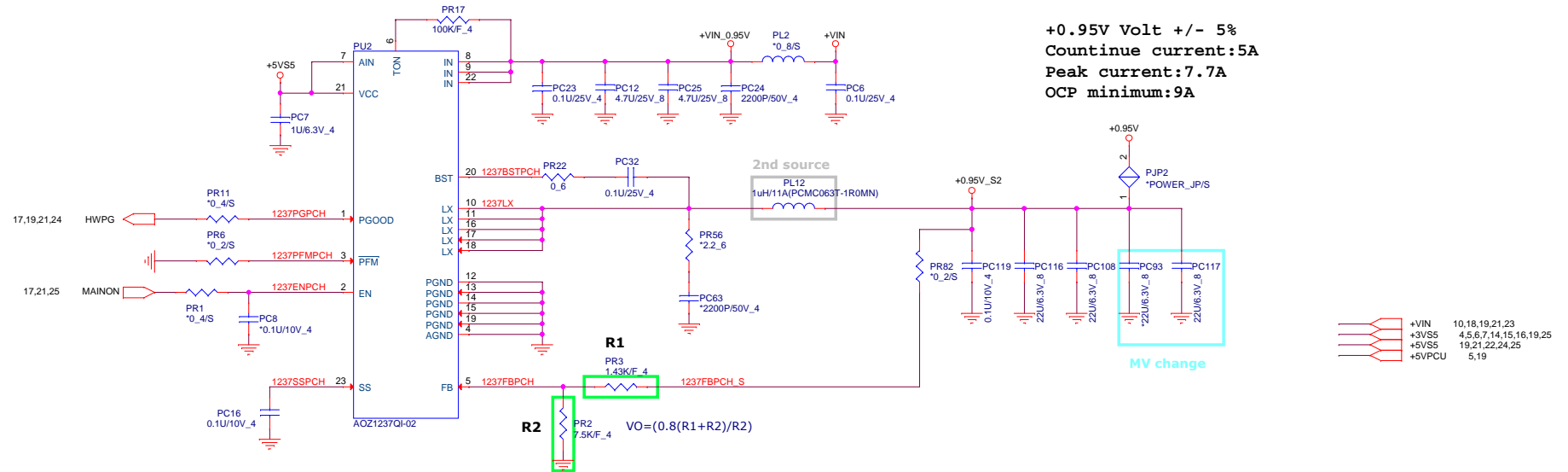




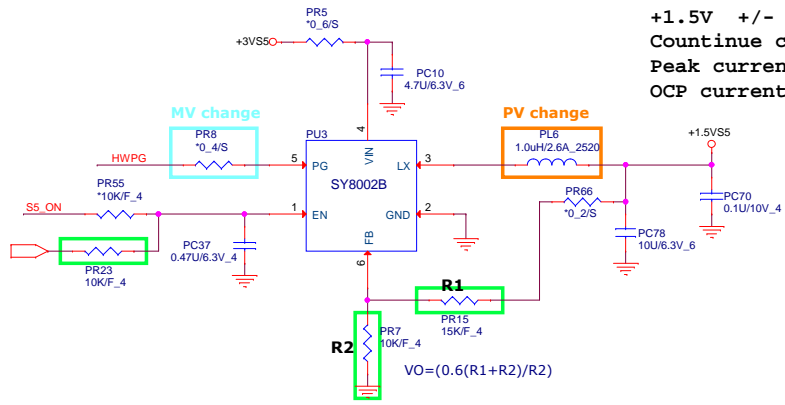
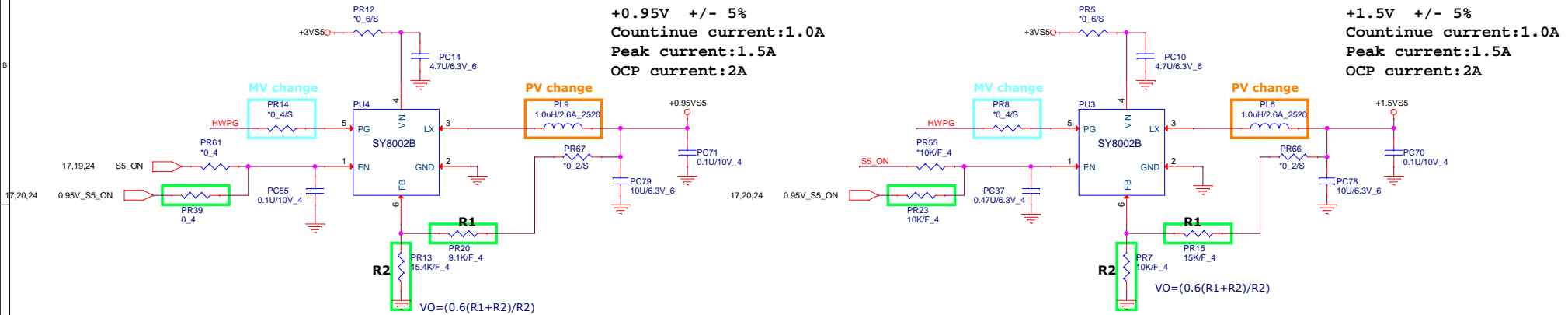


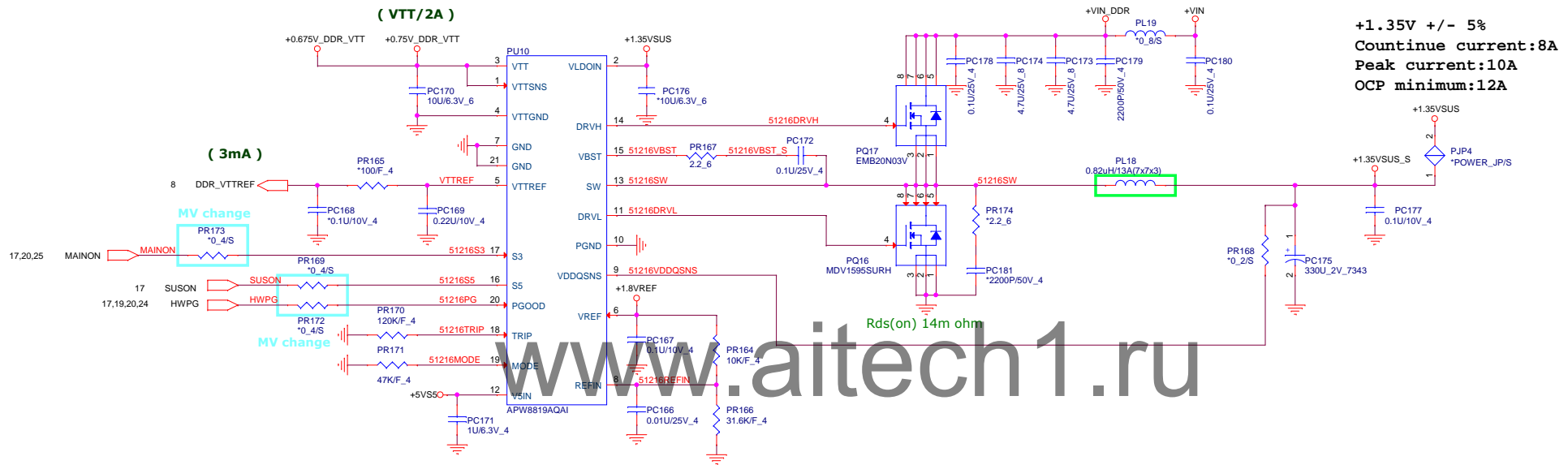
Reserve for NB670 5V version.

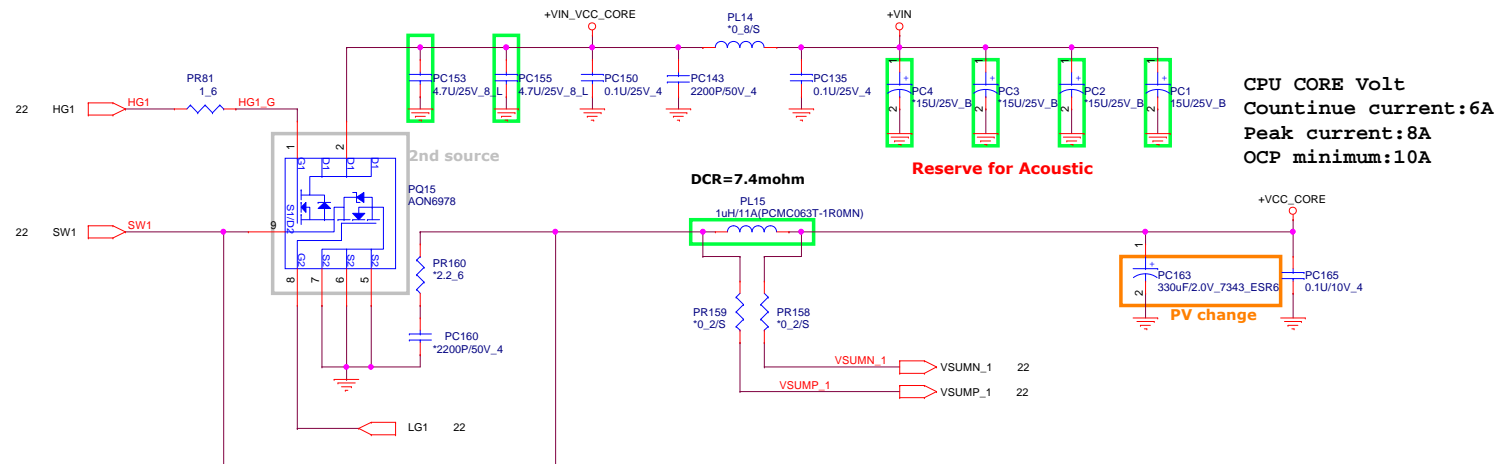
If +5vpcu no need can change part number to NB669



www.aitech1.ru







www.aitech1.ru

